



US010355493B1

(12) **United States Patent**
Fackert et al.

(10) **Patent No.:** **US 10,355,493 B1**
(45) **Date of Patent:** **Jul. 16, 2019**

(54) **SYSTEM AND METHOD FOR SUPPLYING POWER AND MULTI-CHANNEL DATA TO A STAGE EFFECTS DEVICE**

(58) **Field of Classification Search**
CPC H02J 5/00; H04L 12/10; H05B 33/0842
See application file for complete search history.

(71) Applicant: **C.A.E., Inc.**, Hamburg, MI (US)

(56) **References Cited**

U.S. PATENT DOCUMENTS

(72) Inventors: **James H. Fackert**, Brighton, MI (US);
Glenn Witalec, Port Huron, MI (US)

2016/0219679 A1* 7/2016 Snyder H05B 33/0815
* cited by examiner

(73) Assignee: **C.A.E., INC.**, Hamburg, MI (US)

Primary Examiner — Robert L Deberadinis

(*) Notice: Subject to any disclaimer, the term of this patent is extended or adjusted under 35 U.S.C. 154(b) by 172 days.

(74) *Attorney, Agent, or Firm* — Quinn IP Law

(21) Appl. No.: **15/664,475**

(57) **ABSTRACT**

(22) Filed: **Jul. 31, 2017**

A system provides power and data to solid-state lights or other stage effects devices. A power hub receives the data as an input signal and includes output ports each with data conductors and power conductor pairs. The hub includes a buffer circuit, a power distribution circuit, and sensor circuits. The buffer circuit distributes data to the output ports. The power distribution circuit receives an input voltage and distributes a calibrated output voltage and maximum current to each output port. The sensor circuits are connected to a respective output port and detect connection of devices and a maximum required power at each output port. The power distribution circuit individually increases voltage to each output port at a calibrated ramp rate based on the maximum required power. The interface circuit connects the data conductors and the power conductor pairs to the devices and passes the voltage/power and data thereto.

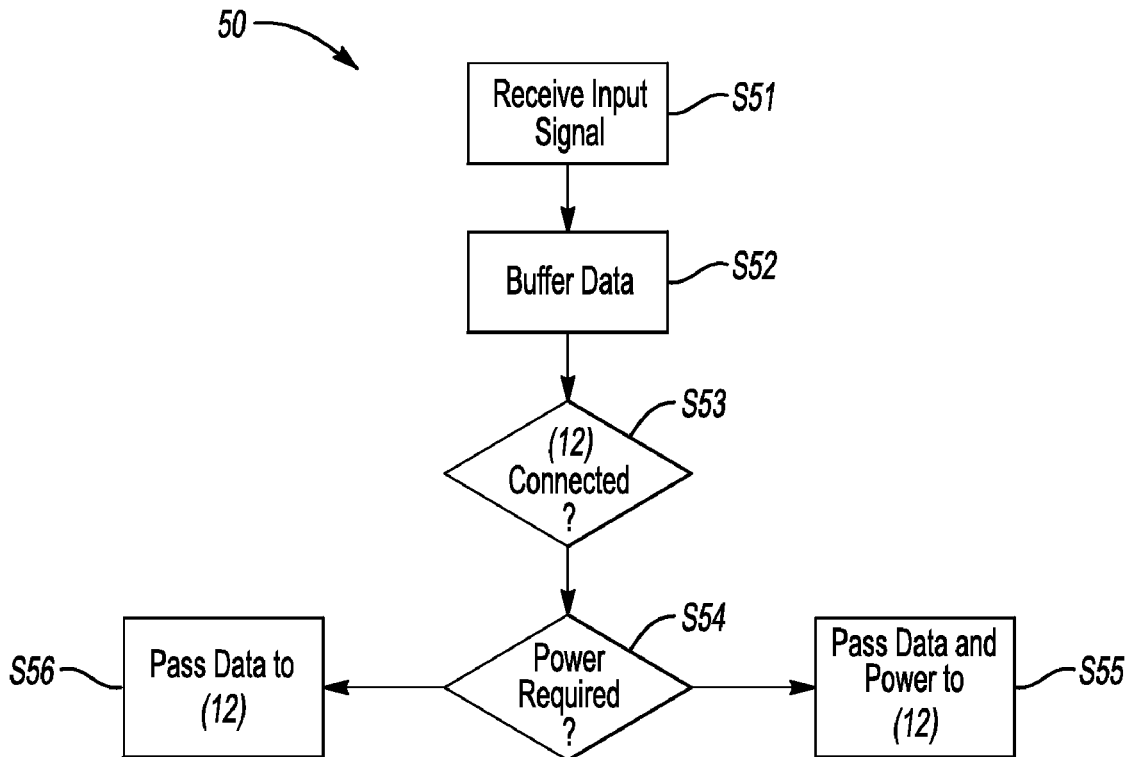
Related U.S. Application Data

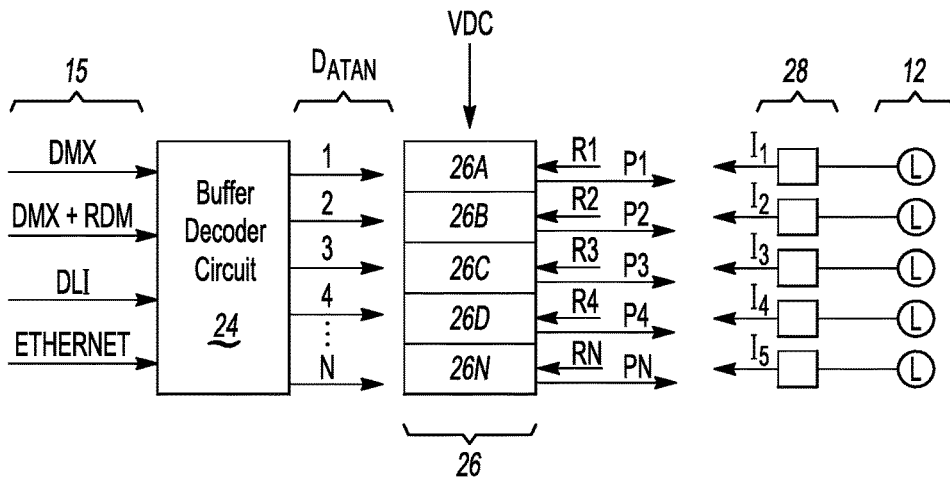
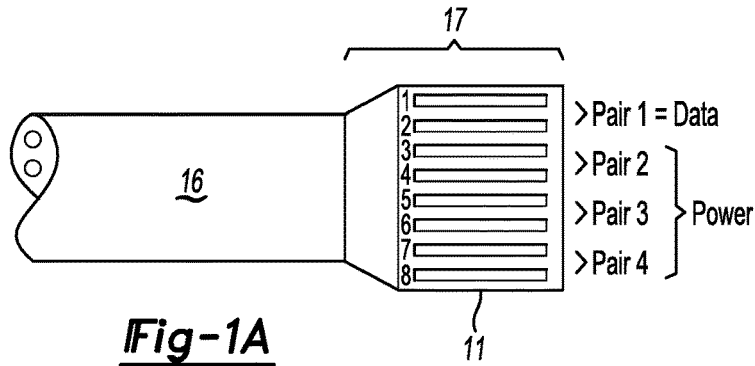
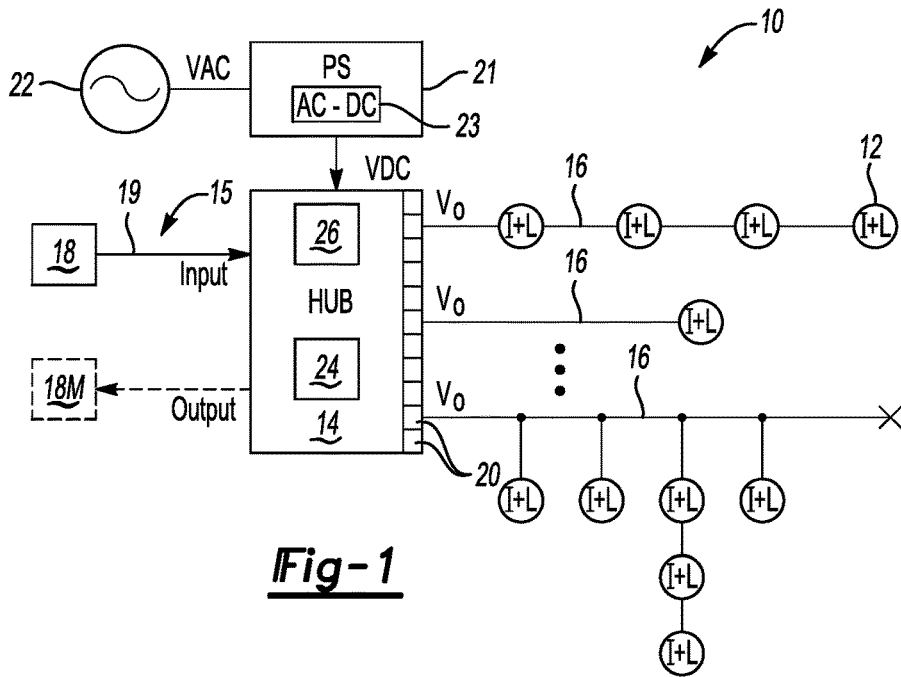
(60) Provisional application No. 62/369,245, filed on Aug. 1, 2016.

(51) **Int. Cl.**
H05B 33/08 (2006.01)
H02J 5/00 (2016.01)
H04L 12/10 (2006.01)

(52) **U.S. Cl.**
CPC **H02J 5/00** (2013.01); **H04L 12/10** (2013.01); **H05B 33/0842** (2013.01)

19 Claims, 2 Drawing Sheets





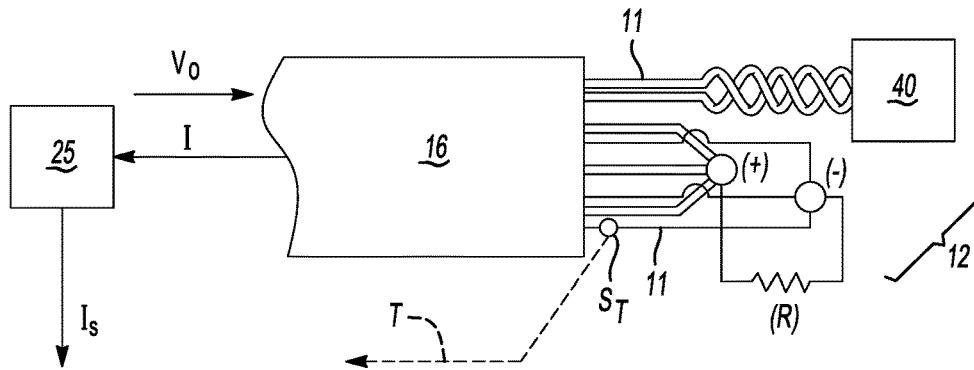


Fig-3

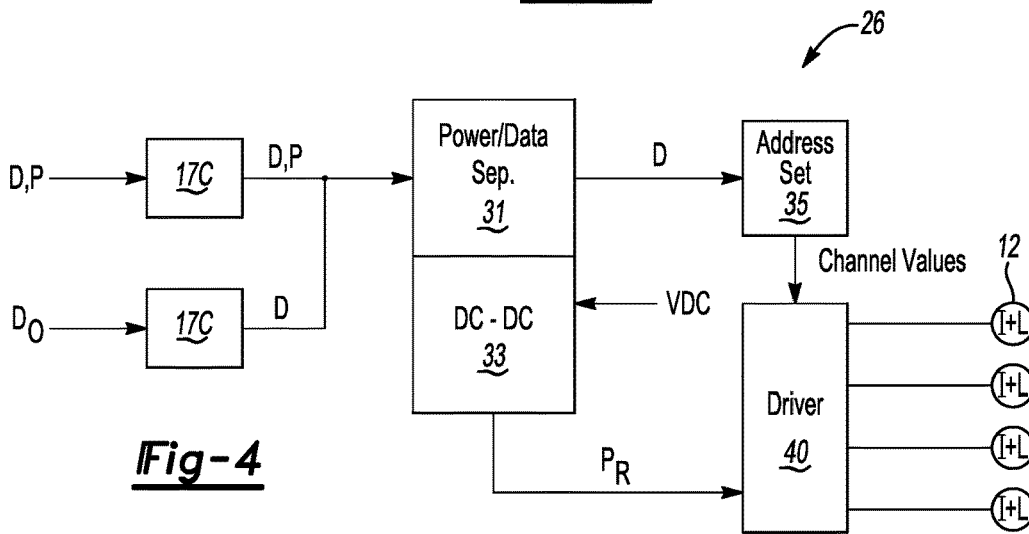


Fig-4

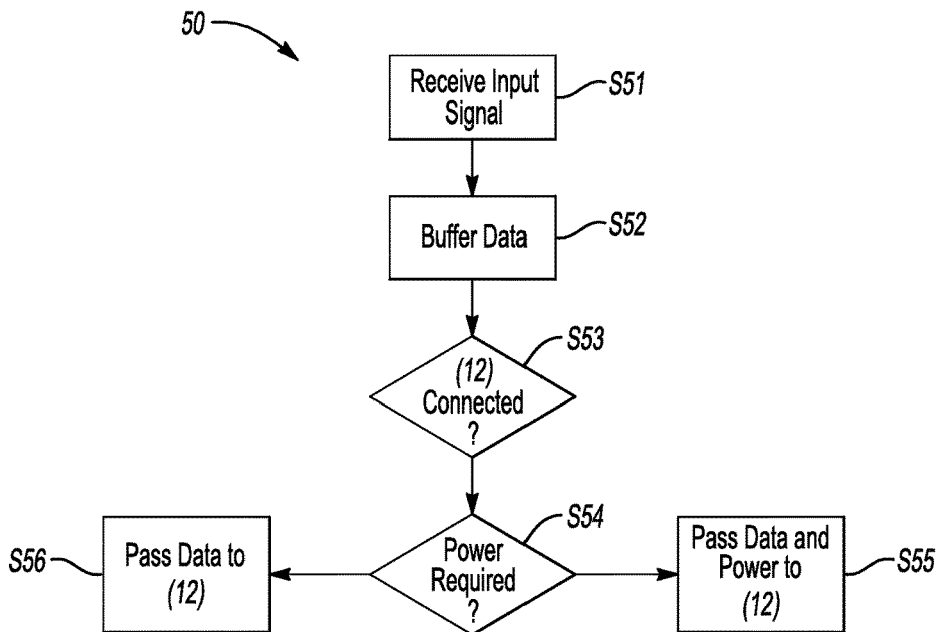


Fig-5

SYSTEM AND METHOD FOR SUPPLYING POWER AND MULTI-CHANNEL DATA TO A STAGE EFFECTS DEVICE

CROSS-REFERENCE TO RELATED APPLICATIONS

This application claims priority to U.S. Provisional Application No. 62/369,245, entitled SYSTEM AND METHOD FOR SUPPLYING POWER AND MULTI-CHANNEL DATA TO A STAGE EFFECTS DEVICE, which was filed on Aug. 1, 2016, and which is hereby incorporated by reference in its entirety.

TECHNICAL FIELD

The present disclosure relates to a system and method for supplying electrical power and multi-channel data to lamps or other stage effects devices.

BACKGROUND

Stage effects are used to enhance the overall audience enjoyment of musical and theatrical performances. For instance, lighting of stage surfaces, props, performers, and even the audience itself may be achieved via strategically positioned lighting fixtures each configured to produce a desired lighting effect. Spot lights, Fresnel lamps, parabolic aluminized reflectors or PAR cans, and ellipsoidal reflector lamps are common examples of such fixtures. The lighting fixtures may be suspended overhead from trusses and controlled by an operator using a lighting board or control console. Mirror balls, smoke machines, pyrotechnics, and video devices are other examples of stage effects devices of the type that require electrical power and integrated control functionality.

In order to improve energy efficiency and enhance color control, traditional incandescent lamps may be replaced by solid-state lighting fixtures utilizing single or multi-colored light-emitting diodes (LEDs). LED fixtures are able to achieve lighting effects comparable to incandescent lamps while consuming a fraction of the power. As a result, 500-1000 W incandescent lamps are being replaced with solid-state lamps in the 20-100 W range, while certain emerging solid-state lamps of 250 W or more producing higher-power lighting effects.

Modern solid-state lighting fixtures generally have built-in power supplies and 120 VAC-rated power. Because conventional systems rely on 15 and 20 amp rated circuits, the power supplies and associated electrical connectors, cables, and supply circuitry tend to be unnecessarily expensive and bulky relative to the much lower power levels needed by new solid state light sources. Additionally, the new lighting hardware is vulnerable to power line surges, and also may pull a high inrush current when power is initially applied. In many cases, circuit breakers and electrical wiring must be overbuilt by four or more times with respect to the actual running power of the lighting fixtures in order to handle the large inrush current, thus negating potential cost savings from the solid-state efficiency gains.

Stage effects are typically controlled using multi-channel addressing according to the DMX-512 protocol, or DMX for short. The DMX protocol, which is ubiquitous in the entertainment field, is also used in architectural and landscape lighting applications. As a specialized application of the RS-422 serial communication standard, DMX is also a “multi-drop”-capable protocol that allows a number of lamp

fixtures or other loads to be daisy-chained in a single run of cable that is terminated at the cable’s endpoint. As such, DMX is useful in controlling large arrays of stage effects such as color-changing and moving lights, moving lasers, mirror ball rotation, and non-lighting stage effects. Using DMX512-A, for instance, 512 separate individually-addressable channels are available for transmission of 256 level increments or other commands to achieve a range of desired lighting effects, e.g., via transmission of digital bit strings.

An extension of the DMX protocol referred to as Remote Device Management (RDM) allows for limited two-way communication with a controlled device, e.g., the lighting fixtures and other devices noted above. RDM allows the controller to identify the lamp manufacturer type, serial number, software version, and operating and fault conditions of the RDM-enabled DMX device. DMX is traditionally carried over shielded twisted pair cables with 5 pin (and sometimes 3 pin) XLR-type connectors, with some movement toward using 4 pair data cable and RJ45 connectors of the type used for Ethernet network connections. Such cables provide the advantage of carrying DMX signals over inexpensive cables with quickly and reliably terminated connectors. In such a configuration, the extra conductors are left unused.

The Power over Ethernet (POE) standard provides electrical power and data through 4-pair cables and RJ45 connectors in certain low-power applications. Designed for powering computer monitors, switches, and voice-over-internet protocol (VOIP) telephones, POE is also currently used in some commercial lighting and security systems in which the power requirement to the individual fixtures is relatively low, and where it is desirable to have bi-directional communication, e.g., to communicate with occupancy sensors, ambient light sensors, and/or Ethernet-linked devices. CAT5 or CAT6 Ethernet cable may be used as part of the POE standard. CAT5 uses four twisted pairs of a 24-gauge electrical conductor. By comparison, CAT6 uses four twisted pairs of 23-gauge electrical conductors, while some emerging Ethernet cable designs use 22-gauge conductors. The POE standard requires that two conductor pairs in parallel provide 30 W of power, or that four pairs in parallel provide 60 W, with a cable run limit of 1000 feet.

However, the power levels made possible by POE remain inadequate for higher power lighting fixtures and other devices of the type used for stage lighting and other effects of the types described generally above, as is the requirement in the Ethernet protocol for separate cables leading from the hub to each controlled device. For instance, power transmission occurring over CAT5 Ethernet cable is generally limited to the above-noted 30-60 W power range at 48 VDC. The POE standard also requires data transformers and electronics with a high current rating and high-speed data coupling in order to allow transmission of both data and power over all four of the conductor pairs. Also, RJ45-type connectors are designed for data and for limited current, and are easily damaged by arcing during connection and disconnection, especially with inrush exceeding the current rating of the connector. CAT5 and similar cables are also limited in their capacity to provide significant current over the long distances required by POE standards, i.e., 600-1000 feet. CAT5 current handling capacity may be adequate over shorter lengths (25-100 feet) typical of a stage lighting system.

SUMMARY

A system and method are disclosed herein that are usable with a typical lighting board or control console to supply

electrical power and multi-channel data to solid-state lighting or other stage effects devices. While the term “stage” is used herein to indicate a typical target area for illumination or other effects, those of ordinary skill in the art will appreciate that the disclosure has other beneficial uses, such as but not limited to architectural lighting systems where the complexity and lack of versatility of POE is a disadvantage. In other words, the “stage” may be any area or surface targeted by the stage effects devices disclosed herein.

The present disclosure is intended to address some of the limitations set forth above using a power hub to output higher power (e.g., 250-2400 W) to multiple DMX or other data output ports. The power hub communicates with multiple connected lighting fixtures or other stage effects devices via corresponding interface circuits which protect the cables and connectors from overload while delivering power and data to the connected devices at each output port. Power delivery to an outlet port occurs only when the power hub detects, via proportional resistance sensing of the interface circuit, that the appropriate power requirements are present on the output port.

In an example embodiment, the system includes a power hub and multiple interface circuits. The power hub is configured to receive multi-channel data from a control console as a data input signal, and includes multiple “power plus data” (P+D) output ports each having multiple data conductors and power conductor pairs carrying respective data and power signals. That is, each P+D outlet port has a pair of data conductors and multiple power conductor pairs.

The power hub further includes a data buffer circuit, one or more power distribution circuits, and sensor circuits. The buffer circuit distributes data from the input signal to the output ports. For instance, the buffer circuit may be embodied as a DMX splitter, an isolated splitter, or a DMX/RDM splitter-combiner.

Each power distribution circuit receives an input voltage from a power supply and, in turn, distributes a calibrated reduced output voltage to each of the output ports. Each sensor circuit is connected to a respective one of the output ports and is configured to detect a connection of one or more interface-equipped stage effects devices to the respective P+D output port. The sensor circuit determines the maximum required power to be delivered to each output port to power the stage effects devices connected thereto, while preventing excess current flow to the stage effects devices should a fault occur.

The power distribution circuit is in communication with each of the sensor circuits, and individually increases voltage to each of the P+D output ports at a calibrated ramp rate based on the outlet port’s maximum required power, thus preventing excessive inrush current upon connection of the stage effects devices.

The interface circuits connect to the data and power conductors of the hub, and are configured to pass the data to a respective one of the stage effects devices, convert input power on the power conductors to a voltage and power required by the stage effects devices, and connect the conductor pairs to the stage effects devices.

The system may optionally include the control console, which in turn is configured to output data according to the DMX, CAN, DALI, or other suitable control data transmission protocol. Data formats other than DMX may be used in other embodiments to embody the input signal, such as another serial data format such as DALI RS-232 or RS-485.

Optionally, positive temperature coefficient thermistors (PTCs) or other current leveling devices may be employed in electrical series with each output port power conductor to

ensure that no single conductor connected to a given output port carries more than an allotted portion of a total load current.

Power is provided to each P+D output port with an interleaved “soft start”, i.e., a calibrated slow ramp up of voltage to minimize port inrush as well as system inrush. The maximum current provided to a detected load is likewise sensed and limited in a sequence so as to limit a maximum inrush current and maximize availability of power to a number of the output ports.

A monitoring device may be included in some embodiments to communicate with a remote device, such as to an RDM-enabled DMX control console or a separate RDM monitor, the status of the power hub and its various P+D output ports, as well as the interface devices and stage effects devices, either via RDM back through the control cable linking such a console to the power hub or via other suitable communication methods.

The power hub is disclosed in another embodiment, including input ports configured to receive multi-channel data as a P+D input signal from a control console, output ports each having data conductors and power conductor pairs, the buffer circuit, the power distribution circuit(s), and sensor circuits as noted above.

In another embodiment, a system for providing electrical power and multi-channel data to stage effects devices includes a power hub configured to receive the multi-channel data as a P+D input signal from a control console, and an interface circuit connected to the power hub. The hub includes a P+D output port having data conductors and power conductor pairs, a power distribution circuit configured to distribute a calibrated output voltage to the output port, and a sensor circuit. The sensor circuit is connected to the output port and configured to detect a connection of the stage effects devices to the output port, as well as to determine a maximum required power to be delivered to the output port to power the stage effects devices by calculating a load resistance on the outlet port. This calculation occurs when the power hub applies the calibrated output voltage.

The above and other features and advantages of the present disclosure will be readily apparent from the following detailed description of the embodiment(s) and best mode(s) for carrying out the disclosure when taken in connection with the accompanying drawings and appended claims.

BRIEF DESCRIPTION OF THE DRAWINGS

FIG. 1 is a schematic circuit diagram of an example embodiment of a system for supplying power and multi-channel data to connected lighting or other stage effects devices.

FIG. 1A is a schematic illustration of a portion of a cable having multiple conductor pairs that is usable as part of the example system shown in FIG. 1.

FIG. 2 is a schematic flow diagram of a power hub and interface circuits usable as part of the example system shown in FIG. 1.

FIG. 3 is a schematic illustration of cable, a sensor, and a solid-state device depicting a sensing function of the power hub shown in FIG. 2.

FIG. 4 is a schematic flow diagram describing operation of a power distribution circuit and example device driver circuit used to power multiple stage effects devices.

FIG. 5 is a flow chart depicting an example embodiment of a method for distributing power and data to connected stage effects devices as set forth herein.

The present disclosure is susceptible to various modifications and alternative forms, and some representative embodiments have been shown by way of example in the drawings and will be described in detail herein. Novel aspects of this disclosure are not limited to the particular forms illustrated in the drawings. Rather, the disclosure is intended to cover modifications, equivalents, combinations, or alternatives falling within the spirit and scope of the disclosure as defined by the appended claims.

DETAILED DESCRIPTION

Referring to the drawings, wherein like reference numbers refer to like components, a system **10** is shown in FIG. **1** that is operable for providing electrical power and multi-channel data to a plurality of stage effects devices **12**. The stage effects devices **12** may be variously embodied as single-color or multi-color/color-changing light-emitting diode (LED) bulbs, lamps, lighting strips, or other lighting devices, and thus the devices **12** are labeled “L” in the various Figures, and “I+L” in FIG. **1** to also indicate the interface circuit **28** of FIG. **2**, for illustrative consistency. However, those of ordinary skill in the art will recognize that other stage effects devices **12** exist such as smoke machines, pyrotechnic devices, mirror balls, simulated waterfalls, and video boards, with the present disclosure extending to include control of such alternative devices.

The system **10** of FIG. **1** includes a power hub **14** and, as described below with reference to FIG. **2**, a plurality of interface circuits **26**. With respect to the power hub **14**, this computer hardware and software assembly is configured to receive a multi-channel input signal **15** from a control device **18** over a length of suitable data cable **19**, such as but not limited to a DMX cable. The control device **18** controls operation of the connected devices **12**, and may be embodied as a DMX console or a computer running DMX-512A or another suitable channel-based control software of the types known in the art.

The power hub **14** includes or is connected to a power supply (PS) **21**, which in turn is connectable to an AC power source **22** such as a conventional 120 VAC wall outlet, with the power supply providing a total of at least 250 W and as much as 1200 W to 2400 W of power in different embodiments. The power supply **21** may optionally include an AC-DC converter **23** operable for providing a DC output voltage (VDC) to the power hub **14**.

The power hub **14** also includes a plurality of power plus data (P+D) output ports **20**. Each output port **20** has a pair of data conductors and a plurality of power conductor pairs **17** that may connect to corresponding conductor pairs of a mating cable **16**. Such conductor pairs are found in CAT5, CAT6, and other Ethernet cables **16** having RJ45 or other suitable end connectors, including but not limited to XLR-type shells or other waterproof strain-relieved shells or fittings. In lieu of RJ45, the output ports **20** may be connected via other multi-conductor cables suitable for combined data and power. The power hub **14** disclosed herein may distribute incoming data to the output ports **20** via DMX, with or without RDM, either directly or via CAN, Artnet or other Ethernet input, e.g., via an alternative protocol-to-DMX decoder accepting CAN, Artnet, DALI, or other suitable communication means.

Referring briefly to FIG. **1A**, the cable **16** is shown having four different conductor pairs **17**, i.e., pairs of a suitable wire **11**. There are typically four such conductor pairs **17** in a CAT5 or CAT6 cable, with one conductor pair **17** carrying digital data (DATA) in the form of a bit string and two or

more conductor pairs **17** transmitting power (POWER) via corresponding power conductor pairs **17**. While one conductor pair **17** is typically used as an electrical ground, leaving two possible conductor pairs **17** for use herein, the grounding pair is not necessarily required due to other grounding circuitry present in the system **10**. Thus, as many as three of the conductor pairs **17** may be used to provide power to the stage effects devices **12** within the scope of the present disclosure. The physical order of the pairs is depicted in FIG. **1A** in a simplified manner for illustrative clarity. In reality, an Ethernet cable has an odd order of pairs to reduce crosstalk, with the center two conductors **17** numbered **4** and **5** in FIG. **1A** forming pair **1**, the outer two conductors (**1**, **8**) forming pair **2**, the conductors (**2**, **3**) forming pair **3**, and conductors (**7**, **8**) forming pair **4**.

Referring again to FIG. **1**, the power hub **14** also includes a buffer circuit **24**. The buffer circuit **24** is operable for receiving the data input signal **15** and splitting, distributing, or otherwise assigning the data to the various P+D output ports **20**. The power distribution circuit **26** noted above is configured to receive the input voltage (VDC) from the power supply **21** and distribute a calibrated output voltage (V_o) to each of the output ports **20** at a level depending on the needs of the stage effects devices **12** connected via an interface circuit **28** (see FIG. **2**) to that particular output port **20**, as set forth in greater detail hereinbelow with reference to FIGS. **2-5**. In FIG. **1**, the presence of the interface circuit **28** is indicated schematically by the “I” in the “I+L” label of the devices **12**.

The number of P+D output ports **20** of the power hub **14** may vary with the intended application, but in a particular embodiment may include between 8 and 24 output ports **20** each supplied with 48 VDC in a particular embodiment. A length of the cable **16** from a given one of the output ports **20** is limited to about 50 to 100 feet, i.e., substantially shorter cable runs than the 1000 foot runs permitted by the POE standard described above and known in the art. Therefore, between 250-350 W of power may be provided to each run of the cable **16** and to any of the stage effects devices **12** connected thereto. For instance, the stage effects devices **12** may be low-power stage effects devices **12** connected in a daisy-chain arrangement or a single higher-power stage effects device **12**, or individually tapped in electrical parallel, provided the total power requirement of each run of cable **16**, i.e., the power load on each P+D output port **20**, does not exceed a calibrated maximum power level.

As will be described below with reference to FIG. **3**, such power-based intelligence is provided via the power hub **14** using a plurality of sensor circuits **35** each connected to a respective one of the P+D output ports **20** of FIG. **1**, and configured to detect a connection of the stage effects devices **12** to a respective one of the output ports **20**. The sensing circuits **35** are further configured to determine a maximum power required on each output port **20** that is usable by the stage effects devices **12** connected thereto. The power distribution circuit **26** of FIG. **1** is in communication with each of the sensor circuits **35**, and is further operable for individually increasing power to each of the output ports **20** at a calibrated ramp rate based on the detected maximum power.

Referring to FIG. **2**, the interface circuits **28** are shown schematically as being connected in electrical series, each between a corresponding one of the stage effects devices **12** and the distribution circuit **26**. The interface circuits **28** are configured to pass a plurality of different channels of received data (DATAN) from the P+D input signal **15** to a respective driver and control circuit **40** (see FIG. **4**) of each

of the connected devices **12** on a given P+D output port **20**. The interface circuits **28** are also operable for connecting the various power conductor pairs **17** to corresponding wiring of the connected devices **12**.

The interface circuits **28** may be factory-designed and built into the effects devices, internally added to convert existing devices for use with the present system, or externally-connected to the effects devices **12** as an after-market adapter solution. The interface circuits **28** may accept RJ45 or other input connectors and pass the conductors through to the fixture's internal wiring. Each interface circuit **28** may pass data to pre-existing data reception and "control and power" driver circuits of the effects device **12** while providing a small amount of calibrated electrical resistance across the pairs of conductors, with the resistance being proportional to the maximum power requirement of the connected effects devices **12** on a given P+D output port **20**. In this manner, the power hub **14** can determine the suitability and maximum power requirement for each string of connected stage effects devices **12**.

For instance, as shown schematically in FIG. 3, the cable **16** carrying a particular output voltage (V_o) includes the wires **11**. The data pair is twisted together and electrically connected to a circuit board (not shown) of a driver and control circuit **40** of the stage effects device **12**, such that control data from the power hub **14** is transmitted to a control circuit portion of the circuit **40**. That is, while shown as one driver and control circuit **40** for illustrative simplicity, control and power management are different functions performed within the circuit **40**, and thus may be embodied as two different circuits as is known in the art. The circuit **40** is operable for converting input power to the voltage and power needed by the driver circuit, e.g., a power supply or LED driver in non-limiting lighting device embodiments. The remaining wires **11** are power conductors having separate positive (+) and negative (-) voltage conductors. The positive conductors are connected together at or within the device **12**, as are the negative conductors, as is known in the art. A small variable resistance (R) exists between the conductor pairs **17**.

Thus, when the power hub **14** applies the output voltage (V_o) to the output port **20** and cable **16**, an electrical current (arrow I) in the cable **16** can be sensed, e.g., via an ammeter or other current sensor **25**, which in turn reports the sensed current (arrow I_s) to the power hub **14**. The individual sensed currents are labeled in FIG. 2 as I_1 , I_2 , I_3 , I_4 , and I_N for clarity. The resistance (R) of each, i.e., R_1 , R_2 , R_3 , R_4 , R_N , can be calculated and used to determine the power requirement presented by the collective load on the output port **20**. In this manner, the power hub **14** can detect whether stage effects devices **12** are connected to a given output port **20** and the associated maximum power requirement of the connected devices **12**, and then deliver a corresponding required power to each device or devices connected to a particular output port **20**, with the power represented in FIG. 2 as P_1 , P_2 , P_3 , P_4 , P_N .

Optionally, a positive temperature coefficient resistor (PTC) or other current sensing/limiting device (S_T) may be employed on each power conducting wire **11** in electrical series with each P+D output port **20**. A sensed temperature (T) or other value may be communicated back to the power hub **14** and used to help ensure that no single wire **11** connected to a given output port **20** carries more than an allotted portion of a total load current, e.g., with the power hub **14** diverting power to different conductor pairs **17** when an over-temperature condition is detected.

FIG. 4 is a schematic flow diagram describing operation of the power distribution circuit **26** and an example driver and control circuit **40** used to power multiple stage effects devices **12**. End connectors **17C** contain the conductor pairs **17** described above. The end connectors **17C**, which may be variously embodied as RJ45, etherCON, or other suitable end connectors, provide connectivity for transmitting data (D) and power (P), with some embodiments providing talk-back capability in the form of output data (D_o) allowing communication back back to the console **18** shown in FIG. 1.

The power distribution circuit **26** of FIG. 4 may include a power/data separator circuit **31** that is configured to separate the power signals (P) from the data signals (D), such that the data signals (D) are ultimately passed to a receiver/address set block **35** which in turn outputs channel values to the driver and control circuit **40**.

Separately, the power distribution circuit **26** may include a DC-DC converter **33** that delivers a required voltage (P_R) to the driver and control circuit **40**, up to a maximum power value of the power supply **21**, to power the connected stage effects devices **12**. In other embodiments, an auto-limit/scale option may be envisioned in which the power/data separator module **31** is replaced with a DMX value scaling module (not shown) in which a scaled DMX value is output to the address set **35**. For instance, a total amount of currently-used power can be sensed and limited by digital proportional scaling of only the levels of specific control channels relevant to power consuming functions that control parameters such as color drive levels. Such levels can be limited in proportion while leaving other control channels unaffected, e.g., channels that influence position or other low-power functions.

FIG. 5 depicts an example method **50** for supplying power and multi-channel DMX or other data to the stage effects devices **12** described above. The method **50** begins with step **S51** in which multi-channel input data **15** is received by the power hub **14** as shown in FIGS. 1 and 2.

The method **50** then proceeds to step **S52** where the received input data signal **15** is buffered within the power hub **14**. At step **S52**, the various addresses of the input data signal **15** are assigned or distributed to a particular P+D output port **20** having the assigned effects devices **12**, e.g., as determined beforehand by the console **18**. The method **50** then proceeds to step **S53**.

Step **S53** entails determining, via the power hub **14**, whether the stage effects devices **12** are connected to a given P+D output port **20**. Step **S53** may entail apply sensing the current (I_s), as a positive current inflow from the stage effects devices **12** is indicative of connected devices **12**. If no such connection is detected, the method **50** may repeat step **S51**, and optionally report the lack of a connection, e.g., via RDM talk-back to the console **18** or optional monitoring device **18M**. Lack of connection may be indicative of a given stage effects device **12** having its own power supply, or a faulty stage effects device **12**, and therefore such talk-back/feedback may be useful in some embodiments.

At step **S54** the power hub **14** next determines whether power is required by the connected device(s) **12** for each P+D output port **20**. Similar to the current sensing occurring at step **S53**, step **S54** entails sensing the small resistance (R) across the conductor pairs **17** of the stage effects device **12**, which is again possible via the current sensing using sensor **25** of FIG. 3. The sensed resistance (R) is proportional to the maximum power required for a particular group of conductor pairs **17** connected to the output port **20**. This sensed resistance, as noted above, is such that several different stage

effects devices **12** each of a low wattage may be daisy-chained together on a single output port **20** and the power hub **14** will still sense and provide the total maximum power required by the group of connected stage effects devices **12** as a whole. In other words, the power hub **14** will indicate whether connected load exceeds a capability of the output port **20** to which the load is connected. The method **50** proceeds to step **S55** when power is required. The method **50** proceeds in the alternative to step **S56** if no power is required.

Step **S55** includes passing data and the maximum power for the P+D output port **20** to the stage effects devices **12** connected to the particular output port **20** evaluated in steps **S53** and **S54**. While described for a given output port **20**, step **S55** occurs across all output ports **20** separately and individually, thereby providing effective control over all connected devices **12**.

Step **S56** includes passing only data to the stage effects devices **12** connected to the particular output port **20** evaluated in steps **S53** and **S54**.

Accordingly, the above-described system **10** and method **50** help address a number of issues with conventional lighting control methodologies. For instance, solid-state lighting systems typically fail to capitalize on the possible efficiency gains due to large inrush and non-linear load effects, which in turn requires substantial overrating of circuit capacity. The present system **10** instead provides careful load detection and power management to eliminate such over-rating.

As set forth above, the power hub **14** may sense overloads and reduce the voltage sent to the effects devices as a control action. The power hub **14** does not apply power to a given output port and connected effects device unless the hub senses a calibrated resistance and determines that it is appropriate to apply power. The calibrated resistance is such that several devices of lower wattage may be daisy-chained together on a single output port. In such a configuration, the hub will sense and provide a total maximum wattage required by the group of effects devices connected on that particular output port.

The interface circuits **28** in this embodiment have the ability to respond to lower voltage inputs by processing the control data that is output to or within the effects devices in order to reduce DMX levels. This occurs only for the appropriate channels relating to power-consuming circuits, e.g., light level circuits, thereby limiting power usage without causing unacceptable and non-compliant behavior. Such an approach stands in stark contrast to conventional overload behavior, which reacts by pulling even more current in an attempt at compensating for the overload or functions in other inappropriate ways. Such behavior may be coordinated on a port-by-port basis, or on a power hub-wide basis, either through signal level processing or through communication with a driver interface for the various effects devices.

Solid-state lighting systems also typically require the use of separate data and power cables, with the power cables and lamp power supplies rated for 120 VAC or more at higher than utilized currents. The present system instead uses low-voltage at controlled power levels to eliminate the need for overbuilding of the necessary power cabling and distribution hardware.

Additionally, in conventional lighting systems the plugging or unplugging of RJ45 connectors under load can potentially lead to electrical arcing and degradation of the connectors. In the present system, the power hub **14** allows for connection of power only after a physical connection is made to the power hub **14** and the suitability of the load and

its associated power requirement is verified. Moreover, the potential hazard of loose conventional cables is eliminated by the presently disclosed load sensing. Likewise, occurrence of large current draw and unequal electrical current across parallel conductors, i.e., the wires **11** of FIG. **3**, is largely prevented by the process of load sensing before applying power to the output ports **20**.

These and other attendant benefits will be readily appreciated by one of ordinary skill in the art in view of the foregoing disclosure. The detailed description and drawings are supportive and descriptive of the disclosure, but the inventive scope is defined solely by the claims. While some of the best modes and other embodiments for carrying out the disclosure have been described in detail, various alternative designs and embodiments exist for practicing the disclosure as defined in the appended claims.

The invention claimed is:

1. A system for providing electrical power and multi-channel data to a plurality of stage effects devices, the system comprising:

a power hub configured to receive the multi-channel data as an input signal from a control console configured to control operation of the stage effects devices, the power hub including:

a plurality of power-plus-data (P+D) output ports each having a plurality of data conductors and at least two power conductor pairs;

a buffer circuit operable for distributing data from the input signal to the plurality of P+D output ports;

a power distribution circuit configured to receive an input voltage from the power supply and distribute a calibrated reduced output voltage to each of the P+D output ports at a voltage level that is less than the received input voltage; and

a plurality of sensor circuits each connected to a respective one of the P+D output ports and configured to detect a connection of at least some of the stage effects devices to the P+D output ports, and to determine a maximum required power to be delivered to each output port to power the stage effects devices connected thereto while preventing an excess current flow to the connected stage effects devices;

wherein the power distribution circuit is in communication with each of the sensor circuits for each output port, and is operable for individually increasing voltage to each of the output ports at a calibrated ramp rate based on the maximum required power; and

a plurality of interface circuits each connected to the power hub and configured to connect the data conductors and the power conductor pairs to the stage effects devices, the interface circuits converting input power from the power conductor pairs to a voltage and power required by the stage effects devices, and passing the voltage, the power, and the data to a respective one of the connected stage effects devices.

2. The system of claim **1**, wherein the stage effects devices include solid-state lighting fixtures.

3. The system of claim **2**, wherein the stage effects devices further include a mirror ball, a smoke machine, a pyrotechnic device, and/or a video device.

4. The system of claim **1**, wherein the input signal is a DMX-512A signal.

5. The system of claim **1**, wherein the input signal is a DMX-RDM signal.

6. The system of claim **1**, wherein the input signal is a DALI RS-232 signal or an RS-485 signal.

11

7. The system of claim 1, wherein each of the plurality of sensor circuits includes a current sensor, and wherein the sensor circuits detect the connection and the maximum required power using the current sensors.

8. The system of claim 1, wherein the power hub includes the power supply, and the power supply is connectable to AC line power and includes an AC-DC converter operable for outputting the calibrated output voltage.

9. The system of claim 8, wherein the calibrated output voltage is 48 VDC and the power supply provides output power of about 250 W to 2400 W.

10. The system of claim 1, further comprising: a monitoring device in communication with the control console that is configured to display a status of the power hub and each of the P+D output ports.

11. The system of claim 1, wherein each of the P+D output ports is configured to connect to an RJ45 connector.

12. The system of claim 1, wherein when the power hub applies the calibrated reduced output voltage to the P+D output ports, each of the sensor circuits is configured to calculate a resistance of a collective load on a corresponding one of the P+D output ports and use the calculated resistance to determine the power requirement presented by the collective load.

13. The system of claim 1, further comprising a plurality of positive temperature coefficient thermistors each connected in electrical series a respective one of the P+D output ports.

14. The system of claim 1, wherein each of the interface circuits is configured to provide a calibrated electrical resistance across the respective power conductor pairs for a corresponding one of the P+D output ports, the calibrated resistance being proportional to a maximum power requirement of the connected stage effects devices on the given one of the P+D output ports.

15. The system of claim 1, further comprising the control console.

16. The system of claim 1, wherein the buffer circuit is a DMX splitter or an isolated splitter.

17. A power hub for use with a system having a power supply, the system being configured to provide electrical power and multi-channel data to a plurality of stage effects devices via a plurality of interface circuits connected to the power hub, the power hub comprising:

input ports configured to receive multi-channel data as an input signal from a control console;

power-plus-data (P+D) output ports each having data conductors and power conductor pairs;

12

a buffer circuit configured to distribute data from the input signal to the P+D output ports;

a power distribution circuit configured to receive an input voltage from the power supply of the system and distribute a calibrated reduced output voltage to each P+D output port at a voltage level that is less than the input voltage; and

a plurality of sensor circuits each connected to a respective one of the P+D output ports and configured to detect a connection of some or all of the stage effects devices to the P+D output ports, and to determine a maximum required power to be delivered to each P+D output port to power the stage effects devices connected thereto while preventing excess current flow to the stage effects devices;

wherein the power distribution circuit is in communication with each sensor circuit for each P+D output port, and is configured to increase a voltage to each of the P+D output ports at a calibrated ramp rate based on the maximum required power.

18. The power hub of claim 17, wherein the power hub includes the power supply.

19. A system for providing electrical power and multi-channel data to a plurality of stage effects devices, the system comprising:

a power hub configured to receive the multi-channel data as an input signal from a control console, and having: a P+D output port having data conductors and power conductor pairs;

a power distribution circuit configured to distribute a calibrated output voltage to the P+D output port; and a sensor circuit connected to the output port and configured to detect a connection of the stage effects devices to the P+D output port, and to determine a maximum required power to be delivered to the P+D output port to power the stage effects devices by calculating a load resistance on the P+D outlet port when the power hub applies the calibrated output voltage; and

an interface circuit connected configured to connect the power hub, and configured to connect the data conductors and the power conductor pairs to the stage effects devices, to convert input power from the power conductor pairs to a voltage and power required by the stage effects devices, and to pass the voltage, the power, and the data to a respective one of the connected stage effects devices.

* * * * *