

Philips Vari*Lite VLX Wash

By: Mike Wood



Fig. 1: Unit as tested

It's been a couple of years since we've looked at a product from Vari-Lite. Now known as Philips Vari-Lite, it remains one of the best-known and respected manufacturers of automated lighting, with a history that goes back to the first days of such products. The company has always been recognized for its innovation with color systems; the

VL5 wash light, with its radial dichroic color system and distinctive turbine appearance has become an iconic workhorse product. That tradition continued with the VL500 Wash. Now Vari-Lite makes its first move into LED technology with the VLX Wash. How does it perform? Does it live up to the legacy of its illustrious forebears? Is the light output enough? I hope this review will help you determine that for yourself.

As always, I reviewed a single unit, supplied to me by Vari-Lite as typical of the product, taking measurements of everything I can think of that's measurable, from light source to output. The VLX Wash is fitted with a universal power supply, rated from 100-240V 50/60Hz, and, for these tests, the luminaire was run from a nominal 115V 60Hz supply (Figure 1).

Light source and primary optics

In this review, we're going to spend longer than usual discussing the light source, as it is the key to this product. The

VLX uses seven LED arrays from Luminus Devices (Fig. 2), each of which contains four emitters: red, green, blue, and white. The arrays are nominally rated at 120W total power each, although, as with all LEDs, the rating is more of a guide and can be pushed up and down, depending on the efficiency of your cooling system. Although LEDs do have a maximum current rating, the usual limiting factor is temperature. Keep them cool and you should be okay. Luminus Devices specializes in the development of very high-output LED arrays with a number of features that make them suitable for our industry. Two in particular are important to us. Firstly, they mount the dies directly on to a heat-conducting substrate (often copper) with as few intervening semiconductor or insulating layers as possible, to maximize heat transfer. Secondly, each die is capped with layers of a photonic lattice structure in a secondary fabrication process. This lattice serves to act like a series of minuscule light pipes and controls the beam angle of the emitted light, reducing it from the normal 180° Lambertian output down to a much more manageable modified Lambertian with a lot more of the energy in the central 120°. (It varies for each color, with red and white being wider than blue and green). Vari-Lite claims a lifetime for the LEDs in excess of 10,000 hours. The Luminus data sheet suggests this should be a conservative estimate and a longer life, albeit with slowly reducing output, is likely.

Vari-Lite mounts those arrays onto individual heat spreader plates (of which more later) and then immediately couples the light outputs into long hexagonal glass integrating rods or light pipes encased in protective aluminum tubes (Fig. 3). Here's where the narrower exit angle of the Luminus Devices LED comes into play, as that reduced exit angle of the die is closer to that needed to get perfect coupling with the glass rod, so that all beams inside the rod are within the TIR (total internal reflection) angle, and bounce back and forth inside the rod with almost no loss. These reflections within the rod

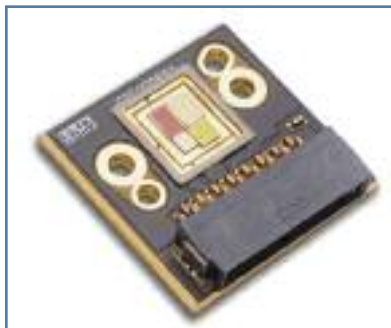


Fig. 2: Luminus Devices LED array



Fig. 3: LED and light pipe



Fig. 4: Driver boards and light pipes



Fig. 5: Output lenses with beam spreader removed



Fig. 6: Heat pipes



Fig. 7: Heat sinks and fans

help to homogenize the outputs of all four dies into a single, uniformly colored beam. At the other end of each of those integrating rods is a very deep compound parabolic concentrator (CPC) reflector (Fig. 4), which collects and condenses that homogenized beam through a molded plastic Fresnel lens, which in turn caps the reflector and produces the VLX's native field angle of around 22°. Figure 5 shows the final reflectors each with their associated output lens.

Heat management

As we've discussed before, the successful application of LEDs is all about good heat management. LEDs are very sensitive to temperature, operating best when you keep them below 80°C—the lower the better. In the VLX, Vari-Lite has more than 1,000W of heat to get rid of from the LEDs and drivers—no easy task. To do so, they've had to go to extreme lengths that will perhaps be more familiar to a PC manufacturer than an automated light company. The copper heat spreader, mentioned earlier, on which the LED sits is actually the heat collection block for a combination heat pipe and heat sink system. As you can see in Figure 6, each copper block has three heat pipes leading through it, which transport the heat energy away from the LEDs and into the seven finned heat sinks. Six of these are mounted in a ring around the edge of the luminaire and the final, seventh, one is mounted flat to the plate in the middle of the luminaire. Each of the six circumferential heat sinks has its own fan forcing air through the fins. But that's not all! As illustrated in Figure 7, there is a second, inner, ring of more conventional

aluminum finned heat sinks on the back side of the fans that connect to the main heat spreader plate that's common to all seven LED arrays. The fans pull air through one heat sink, and then push it out through another.

With the covers back on the unit, the heat management system is visible through the large air vents on the rear of the unit (Fig. 8). Vari-Lite tells me it's merely serendipitous that this shape echoes the asterisk in the company's logo and the vanes in a VL500.

Is this complex system effective? It appears so; I ran the unit for many hours in my workshop and the thermostatically controlled fans kept everything on an even keel. As you probably know, the output of LEDs is temperature-sensitive, with red LEDs the most affected. If a luminaire doesn't compensate for this, its red output will rise and fall disproportionately and the color mix will shift as the LED temperatures change. Vari-Lite compensates for this by measuring the temperature and adjusting levels accordingly, so that all colors track together and keep the color mix constant. In my tests, the drop in output from a cold start to equilibrium was only a few percent, showing that the VLX temperature management was working well.

Optics

We've talked about the primary optics, which produce the native narrow beam; however, the VLX has a secondary variable optical system mounted after those lenses. Vari-Lite calls this a beam spreader; it uses two adjacent lens plates that can be varied in separation by three small linear actua-



Fig. 8: Heat sink array



Fig.9: Beam spreader

tor stepper motors. One of the plates has an array of concave dimples; the other has a matching array of convex bumps. When the two plates are pushed together, the dimples align with the bump and mesh. This effectively cancels out the optical properties of both the concave and convex elements; the combination has no net effect on the beam. However, as you start to separate the two plates, an air gap



Fig. 10: Front lens array

opens up between the bumps and dimples, and they each act as lenses with the overall combination, acting to widen the beam. The further apart the two plates are, the wider the beam. Figure 9 shows a side view with the two plates together (left) and separated (right). The movement isn't much, but it's enough to take the measured field angle through a 2.5:1 range from 23° to 57° in my tests. Figure 10 shows the view in the front of the unit when the beam spreader is closed. Each of the small grid of squares you can see in that image is one pair of nested concave and convex elements.

Output

Of course, the user doesn't really care about how Vari-Lite does its heat management; all that really matters is that it has been done well enough that light continues to come out of the front. But how much light and what's the quality of that light like? I measured the output with all four LED channels at full at 13,120 lumens in a narrow field angle of 22.6°, ramping down to around 11,700 lumens at the 57.2° wide field angle. This is certainly the highest output I've measured in an LED fixture so far. The mix with all channels at full is a slightly greenish hue, well off the black body line—so far, in fact, that my instruments couldn't calculate a sensible correlated color temperature; it was clearly very high. However, by reducing the green and blue channels, I also mixed a 5,600K white as close to the black body line as I could. That dropped the output to a level about 90% of the previous figures, which is still very good.

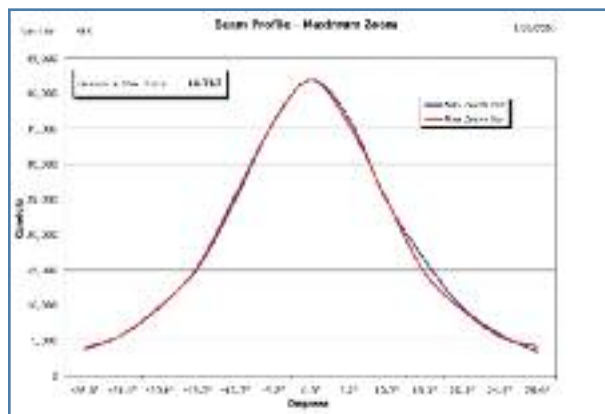


Fig. 11: Beam profile, maximum zoom

The beam profiles at wide and narrow are shown in Figures 11 and 12 and are both smooth and very usable. Interestingly, the narrow angle has a significantly flatter distribution than the wide—a function of the optics of the beam spreader. You can clearly see the beam profiles in the false color shots shown in Figures 13 and 14 taken with the Special Labs webcam. Figure 13 is the narrow angle and shows a very flat

central region; the wide angle shown in Figure 14 shows a more peaky distribution. The color homogenization was also very good—at short throws of less than 20', it is possible to see some slight circular color banding of the red in amongst the mix, but this is minimal, and I suspect wouldn't be visible in normal use. At longer throws, it blends out and there are no colored shadows at all.

As we've seen in a number of prior tests of LED luminaires from other manufacturers, Vari-Lite is doing some power balancing with the four channels. This allows for the maximization of the output for every color mix without exceeding the total heat handling capacity of the luminaire. As the blue channel has the lowest lumen efficiency, I was able to increase the output from the "all at full" level slightly by reducing the blue channel to 50%. At that point, the power that was being consumed by the blue LEDs was being shared amongst the other, more efficient, colors, and the total output went up by about 6%.

Dimming

Figure 13 shows the VLX dimming curves for the "all at full" mix and for a single color. This was with the unit in square law mode. The curve is fine, but equally, if not more, importantly, the quality of the dimming is excellent. Vari-Lite has done a great job of providing smooth dimming while maintaining the color mix. This is particularly difficult to do at the bottom end of the curve, with the final 10% to black out being really hard to get right. Using 16-bit dim mode, I saw no steppiness anywhere on the curve, even when dimming

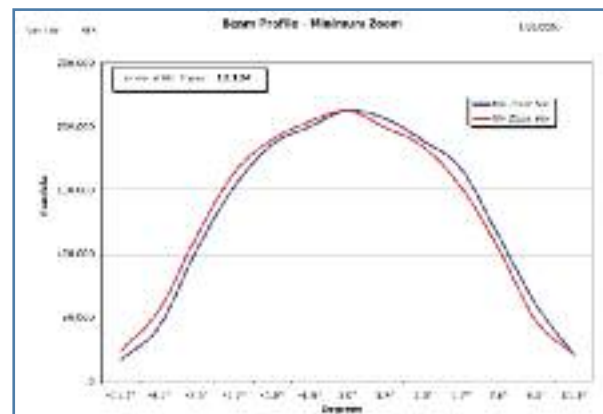


Fig. 12: Beam profile, minimum zoom

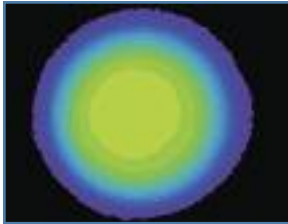


Fig. 13: Narrow angle

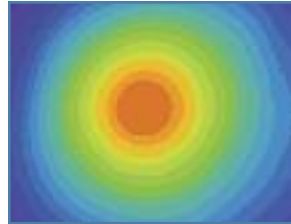


Fig. 14: Wide angle

at very slow speeds. The VLX also offers a strobe mode, and I measured this as ranging all the way up to 47Hz. I'm not sure what such a fast strobe would be used for—but it's there if you need it.

Color system

The output measurements above are in white, but what an LED RGBW unit is really about is color. The VLX mixes a good range of colors within its available RGB gamut. Although it doesn't help widen the gamut of available colors, the white channel helps a lot in mixing pastels, as well as filling in the gaps in the overall spectrum. As I've said before, I find the color mixing range of RGB a little limiting; however, the VLX does an excellent job within those known and understood limitations.

Figure 14 shows the spectrum of the emitted light when all LEDs are at full, and Figures 15 and 16 shows the RGB and white spectrums respectively.

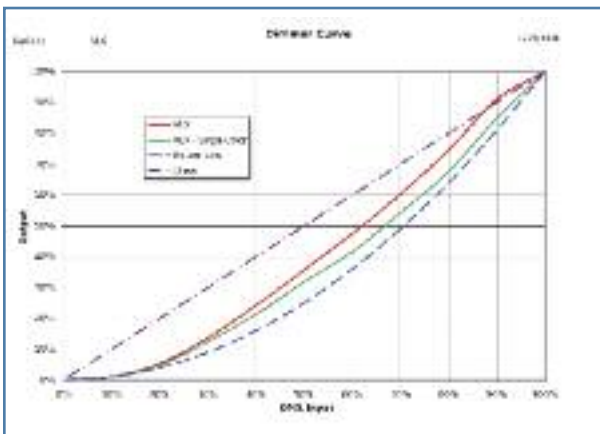


Fig. 15: Dimmer curve

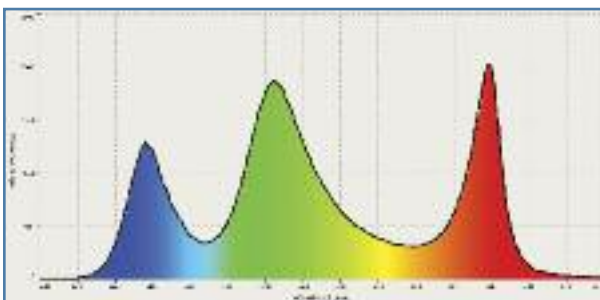


Fig. 16: All at full

It all adds up:

5 theatres
 12 design & production fields of study
 20 productions per year
 24 full-time design & production faculty members
 95+ percent employment
 200 courses per year
 240 design & production students
 80,000 square feet of production facilities

1 extraordinary education

Joseph P. Tilford, dean

SCHOOL OF DESIGN & PRODUCTION
 UNDERGRADUATE & GRADUATE PROGRAMS

Scene Design	Stage Automation
Sound Design	Stage Properties
Technical Direction	Costume Technology
Scenic Painting	Wig and Makeup
Costume Design	Stage Management
Lighting Design and Technology	Performing Arts Management



UNIVERSITY OF NORTH CAROLINA
 SCHOOL *of the* ARTS

Dance | **Design & Production** | Drama | Filmmaking | Music

1533 S. Main Street Winston-Salem, NC 27127-2188
 336-770-3290 admissions@uncsa.edu www.uncsa.edu

The University of North Carolina School of the Arts is an equal opportunity campus of the UNC system.

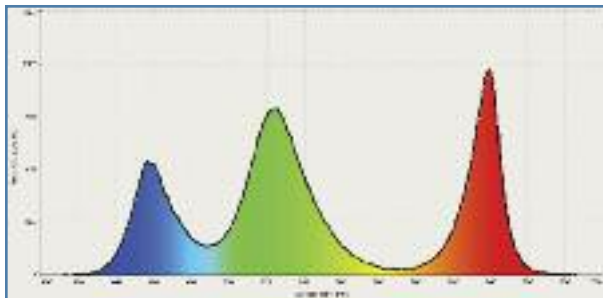


Fig. 17: RGB

The output in the main primary colors as a percentage of full output was as follows.

Color Mixing						
Color	Cyan	Magenta	Yellow	Red	Green	Blue
Output	84%	26%	90%	20%	77%	11%

As mentioned earlier, Vari-Lite is using dynamic power balancing to always maximize the output of colors, which explains why these figures don't appear to add up.

I usually report the PWM frequency of the drivers in LED fixtures; this proved hard to measure with the VLX, as Vari-Lite is clearly using some fairly complex system to smooth out the dimming. However, the core frequency appears to be around 1,500Hz, which should be high enough to avoid

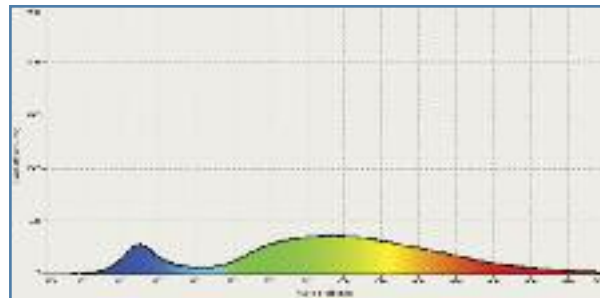


Fig. 18: White

any aliasing flicker with television systems. The webcam light profiling system had no problem with it, and it can be quite sensitive to those issues.

Pan and tilt

The VLX has a pan range of 560° and tilt of 270°. A full range pan move took 5.72 seconds, while a more typical 180° move finished in four seconds. Tilt took 2.7 seconds for a full move and 2.4 seconds for 180°. Positional repeatability on both pan and tilt was around 0.8"—which is around 3" of error at a 20' throw. Pan and tilt behaved slightly differently here. Pan had around a 1.2° overshoot, but then came back to position over a period of one to two seconds, while tilt had almost no overshoot but slightly worse hysteresis. I imagine this is a function of the different dampen-

professional lighting control software for all your projects...

Virtual Controller II

Contact: daslight@daslight.com | Website: www.daslight.com

Daslight

CIRCLE READER SERVICE 46

ON-LINE STORE now OPEN

Original Products

DOUGHTY Tel: (951) 304 - 3408

www.doughty-usa.com

CIRCLE READER SERVICE 47

ing and balance issues on the two axes.

Pan and tilt both use three-phase motors with encoders and belt drives. Figure 19 shows a view of the tilt system in one of the yoke arms. The movement was smooth at most speeds, but exhibited some minor “hunting” at very slow speeds. It’s nothing to be concerned about in a wash light.

Noise

The VLX has eight fans in total—six in the head for the LEDs and two in the top box for the power supplies. Everything is temperature-controlled, so, in normal mode, the fans ramp up and down with the thermal load. I measured noise levels as follows, with everything at full power:

Sound Levels	
	Normal Mode
Ambient	<35 dBA at 1m
Stationary	48 dBA at 1m
Homing/Initialization	57 dBA at 1m
Pan	52 dBA at 1m
Tilt	51 dBA at 1m
Zoom	49 dBA at 1m



Fig. 19: Tilt motor and encoder wheel

The fan noise when operating at full output in “normal” mode is fairly high, but you also have the option of a “quiet” mode, selectable through the configuration menu, where the maximum power is restricted. In that mode, I measured a 30% drop in maximum light output; the stationary noise level from the fans dropped by 8dB from 48 to 40dBA. That’s quite a significant reduction.

Electrical parameters

The VLX has a fully power-factor-corrected auto-ranging (100–240V 50/60Hz) power supply and consumed 11.2A, 1,290W with a power factor of 0.99 when running with all four LED channels at full power in “normal” mode.

The initialization time from power up, or from sending a reset command through the DMX512 control channel, was 45 seconds; the VLX is well-behaved during reset in that that it went to blackout before starting to move and didn’t illuminate again until the reset was finished.

Electronics and control

Electronics are distributed in multiple spots in the luminaire. Power supplies are in the top box, while drivers for the three motor systems, pan, tilt, and beam spreader are mounted in a yoke arm (Fig. 20). Finally, the seven LED driver boards

GALAXY 300...no tipping allowed

James Thomas Engineering has launched the most exciting new product on the market. Our GALAXY series of trusses are not only rugged but extremely efficient for touring or venue work. Units available in both 30" (GALAXY 300) and 24" (GALAXY 240) wide versions.

The main truss is supported by an individual dolly for transport and protection of gear. When the truss is flown, the dolly folds flat and stacks for a clean storage solution. The dolly's height is also adjustable so that a wide range of fixtures (big or bad) may be used. A wide wheel stance prevents the unit from tipping over as with other “green” trusses.

The truss features the Omni fork connection which allows for unlimited configurations. It also has adjustable mounting bars for various fixture connections.



Innovation through Design and Engineering Excellence



are mounted in a ring surrounding the LEDs and their light pipes (Fig. 21). Each LED array has its own driver, and they all appear to run asynchronously (which further confounded my attempts to measure the PWM frequency). Those LED drivers operate at high power and high frequencies, so, in normal operation, they are surrounded by a screen to shield for EMI. Figure 22 shows the unit with EMI screens in place.

The VLX provides an LCD-based display and menu system offering the usual range of functions and configuration

options (Fig. 23). Power and five-pin XLR for DMX512 data come in to a connection panel on the opposite side of the top box (Fig. 24).

Construction

The VLX construction uses a combination of steel chassis, plastic injected molded covers, and a large pair of aluminum die castings for the top box (partly for strength and partly as a heat sink for the power supplies). I had no problem



Fig. 20: Motor driver board



Fig. 21: LED drivers

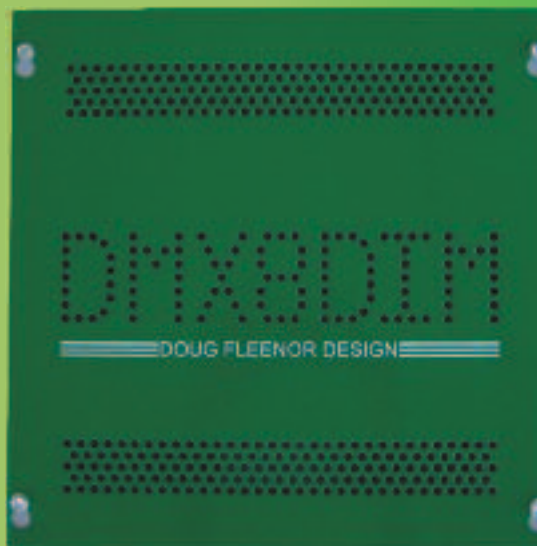


Fig. 22: EMI screens

DOUG DOES DIMMERS

INTRODUCING OUR FIRST DIMMER DMX8DIM

- Green (low idle power, less than 1 Watt)
- DMX512 and DALI versions available
- Eight 250 Watt outputs
- Handles tough, high efficacy loads:
 - Inductive (magnetic low voltage)
 - Low current (120V LED lamps)
 - Cold cathode CFL
 - Fluorescent
- Dim/Non-dim switch for each output
- 12" x 12" x 4" NEMA 1 enclosure
- Single pole 20A feed
- Auto reset overload protection
- Local control for load testing
- LED troubleshooting indicator
- ETL listed to UL508



==== DOUG FLEENOR DESIGN ====

(888)4DMX512



Fig. 23: Display



Fig. 24: Connections



Fig. 25: Pan lock

removing covers and getting into the basic structure of the unit that the regular user would need to access for general maintenance and cleaning (although a magnetic screwdriver is essential for re-assembly). My guess is that the narrow fins on the heat sink will need cleaning, to keep them clear of fog fluid and dirt on a reasonably regular basis to avoid clogging up the cooling system, although Vari-Lite tells me that if that does happen, the unit will just throttle back slightly to keep in safe operating condition.

Both pan and tilt are fitted with push-button operated locking system for transport. You can see the tilt system in Figure 6; the pan system is shown in Figure 25.

Conclusions

Well, there you have it: the Vari-Lite VLX Wash, a very interesting entry into the professional LED lighting

product catalogue. The VLX offers output that is comparable with existing automated lighting units and can fairly be compared on a one-to-one basis. It's perhaps less efficacious than units using more traditional light sources in open white but really comes into its own in colors, particularly the deeper shades where its efficacy, like all additive LED-based units, is significantly better. Is it for you? As always, these reviews should only be a starting point for your own investigations and, if the Vari-Lite VLX interests you, I encourage you to try out the unit for yourself. 📧

Mike Wood provides technical, design, and intellectual property consulting services to the entertainment technology industry. He can be contacted at mike@mikewoodconsulting.com

lighting
trucking
production support
sales
service
storage



AC/DC Tour

CIRCLE READER SERVICE 50

UPSTAGING

www.upstaging.com 815.899.9888

CHICAGO

821 Park Avenue
Sycamore, Illinois 60178
Ph. 815-899-9888
Fax 815-899-1080

LOS ANGELES

415 North Canon Dr., Suite 1
Beverly Hills, California 90210
Ph. 310-859-9800
Fax 310-859-2804